

A photograph of two people walking away from the camera on a narrow suspension bridge made of a green mesh net. The bridge is set in a dense, lush green forest. The person in the foreground is wearing a white t-shirt and a light-colored woven hat. The person further ahead is also wearing a white t-shirt and a white bucket hat. The bridge is supported by thick ropes and wooden posts. The overall scene is bright and natural.

# BINAXNOW™ MALARIA

With malaria, a life could depend on the ability to make an accurate differential diagnosis.

Aids in the diagnosis of *Plasmodium falciparum* infection versus pan-malarial infection caused by *Plasmodium vivax*, *Plasmodium ovale* or *Plasmodium malariae*

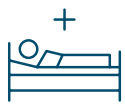
# MALARIA: KEY FACTS

The Asia-Pacific region accounts for nearly 70% of the burden outside the World Health Organisation (WHO) African region. The prevalence of *P. falciparum* and *P. vivax* varies by country but on average is around 60% and 40%, respectively. Within this region, India and Indonesia accounted for 80% and 16% of the reported cases and 60% and 30% of malaria deaths in 2016, respectively.<sup>1</sup>



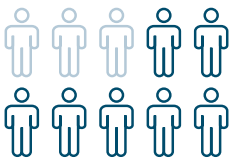
## 3.3 BILLION

Almost half the world is at risk of malaria. In 2016, the African region was home to 90% of malaria cases.<sup>1</sup>



## 216 MILLION

Cases in 2016, compared to 211 million cases in 2015.<sup>1</sup>



## 445,000

Deaths in 2016. Of these, roughly two-thirds were children under 5 years of age.<sup>1,2</sup>



As per WHO recommendation, all cases of suspected malaria need to be confirmed by diagnostic testing prior to providing treatment.<sup>3</sup>

## BINAXNOW™ MALARIA

**TOTAL TIME: 15 MINUTES**

Obtain blood

Add blood and reagent to card

Close card and read results in 15 minutes

For fast, qualitative detection of antigens to four species of malaria:  
*P. falciparum*, *P. vivax*, *P. malariae* and *P. ovale*

#### RAPID

- Results seen in 15 minutes, enabling immediate treatment

#### EASY TO USE

- Simple-to-use test using only one reagent
- Requires just a small blood sample easily collected by fingerprick
- No need for skilled microscopist

#### EASY TO INTERPRET

- Differentiated results that aid in the diagnosis of lethal *P. falciparum* infection
- Objective, qualitative results
- No subjective assessment required

#### ACCURATE AND RELIABLE

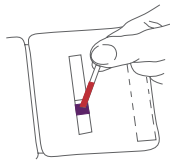
- High specificity and sensitivity
- Built-in procedural control ensures test viability
- Reduces unnecessary use of antimalarial drugs, thereby helping to minimise the development of drug-resistant malaria strains



# BinaxNOW™ Malaria Test

HIGHLY SENSITIVE AND SPECIFIC FOR DETECTION OF MALARIA INFECTION

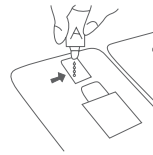
**1** Apply 15 µL of blood to the purple pad. Ensure the entire pad is covered.



**2** Apply 2 drops of reagent to the white pad immediately below where the blood was applied.



**3** Apply 4 drops of reagent to the pad located at the top of the left-hand side of the test card after the blood runs up the full length of the test strip.

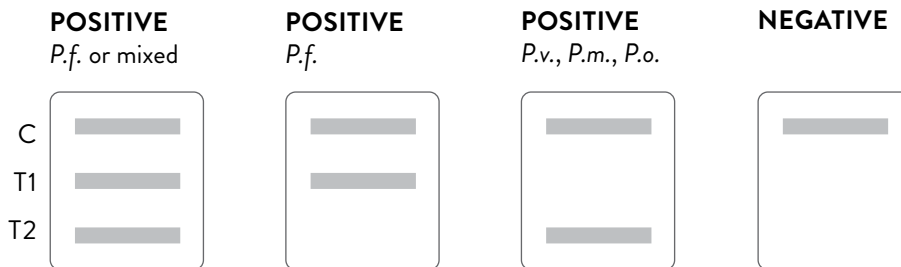


**4** When the blood sample reaches the base of the white absorbent pad at the top of the test strip, close the device and read the results.



Procedure shown is for a capillary blood sample. For complete Instructions for Use, see the Package Insert.

## READING RESULTS



### FINGERSTICK SAMPLES

	% Sensitivity	95% CI	% Specificity	95% CI
<i>P.f.</i>	98.8%	94%–100%	90.4%	88%–92%
<i>P.v.</i>	80.6%	73%–87%	99.5%	99%–100%

### PRODUCT INFORMATION

PRODUCT	ORDER NUMBER
BinaxNOW™ Malaria Test 5 Test Kit	66005
BinaxNOW™ Malaria Test 25 Test Kit	660-000

### OTHER BINAXNOW™ TESTS

BINAXNOW™ INFLUENZA A & B  
(NOT AVAILABLE IN THE UNITED STATES)  
BINAXNOW™ LEGIONELLA  
BINAXNOW™ RSV  
BINAXNOW™ S. PNEUMONIAE  
BINAXNOW™ STREP A  
BINAXNOW™ G6PD  
ALERE FILARIASIS  
(NOT AVAILABLE IN THE UNITED STATES)

CI = confidence interval

1. WHO Malaria Report 2017. <http://www.who.int/malaria/publications/world-malaria-report-2017/report/en>  
2. <https://data.unicef.org/topic/child-health/malaria/>  
3. <https://www.who.int/news-room/fact-sheets/detail/malaria>

