

Before you begin

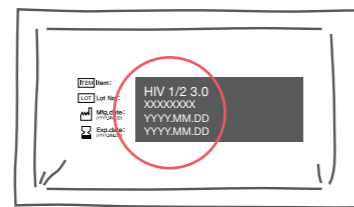
- Please read the instructions for use in its entirety, prior to use.
- Cover your work space with a clean, disposable absorbent workspace cover.
- All components must be brought to room temperature (between 15-30 °C) prior to testing.

Preparation

- Test pouch (test device)
- Alcohol swab
- Sterile lancet or safety lancet
- Assay diluent
- Disposable capillary pipette (20 µl)
- Timer (not provided)
- Disposable gloves (not provided)

For more detailed instructions please refer to Instructions for use.

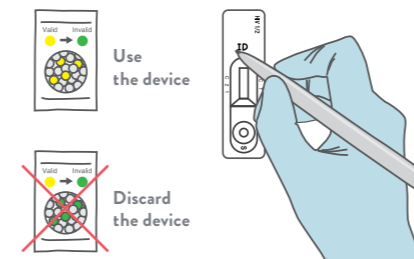
1 Check the expiration date. **If the device is expired, use another kit.**



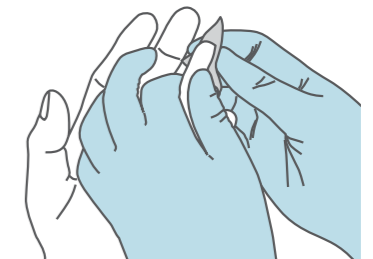
2 Put on disposable gloves. **Use new gloves for each patient.**



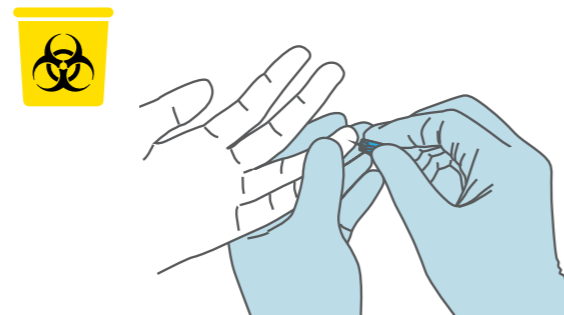
3 Open the test pouch and check the desiccant. **If the color is green, use another kit.** Write the patient's name on the test device.



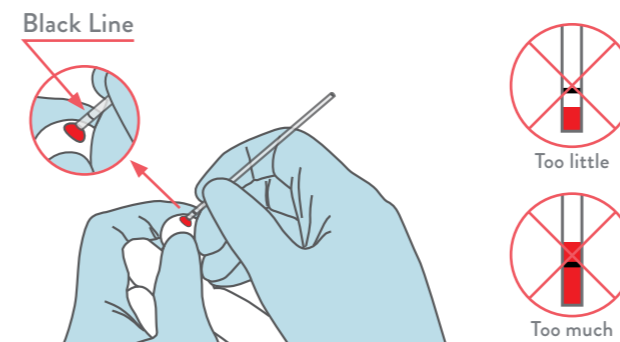
4 Open the alcohol swab and clean the patient's finger. **The alcohol must be dried before pricking, or the test may NOT work.**



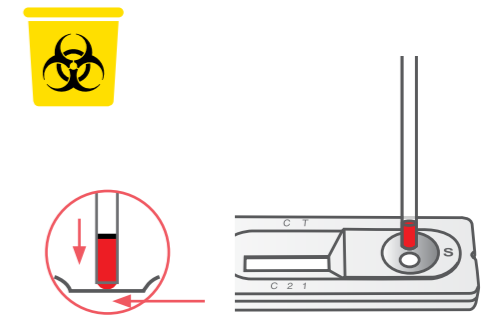
5 Prick the patient's finger with the lancet. **Discard the used lancet in the biohazard box immediately after pricking the finger.**



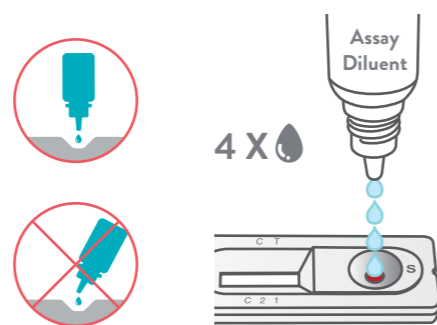
6 Squeeze the upper part of the capillary pipette and bring the open tip to the blood. Slowly release the pressure to collect the drop of blood up to the marked black line.



7 Add drawn specimen into the round specimen well (marked 'S'). **Discard the pipette in the biohazard box after use.**



8 Add **4 drops** (120µl) of assay diluent into the round specimen well (marked 'S').



9 Read results between **10-20 minutes** after adding diluent.

Do not read after 20 minutes. Reading outside of this time frame may provide false results.



Caution: Visible test lines should be considered positive, even if faint.

LINE	POSITIVE		NEGATIVE	INVALID	
	HIV-1	HIV-2			
Control	Line	Line	Line		
2	Line	Line		Line	Line
1	Line	Line		Line	Line

The control line should appear for all results. If it does not appear, the result is considered invalid and the specimen should be retested using a new test kit.

FOR TECHNICAL SUPPORT PLEASE VISIT ABBOTT.COM/POCT