



Recombinant Peptostreptococcus magnus Protein L

Product Name: Recombinant Peptostreptococcus magnus Protein L, r-PPL

Catalog Number: NRPA21S

Packing Details: 1 mg, 10 mg, 100 mg, 500 mg

Formulation: Lyophilized from 5mM PB(4mM Na₂HPO₄, 1mM NaH₂PO₄, pH7.4)

Mol. Wt.: 41.5kDa

Theory pI: 4.86

Purity: ≥95% (SDS-PAGE)

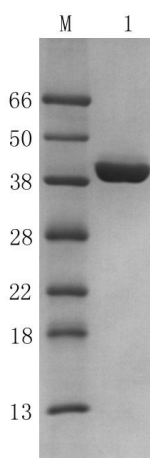
Resources: Escherichia coli (E. coli)

Storage Condition: -20°C

Storage Duration: 3 years

Description:

Protein L, derived from *Streptococcus Alimentarius*, is a protein that can bind to a wide range of immunoglobulins. It only binds to the antibody's kappa light chain without affecting the antibody's antigen binding site. Compared with protein A or protein G, protein L can bind antibodies from various sources and subclasses more widely. It does not bind immunoglobulins from cattle, goats or sheep, and can be used to purify monoclonal antibodies from culture medium supplemented with BSA or FCS.



M: Protein molecular weight standard

Lane 1: r-PPL

Gentaur Europe BVBA

Voortstraat 49, 1910 Kampenhout BELGIUM
0032 16 58 90 45 info@gentaur.com

Genprice Inc.

547 Yurok Cir San Jose, CA 95123, USA
(408) 780-0908 genprice@gentaur.com