

## Product data sheet

<b>Product number</b>	000102A06H
<b>Antibody specificity</b>	Ig mu chain C region (IgM)
<b>Species reactivity</b>	Human
<b>UniProt</b>	P01871
<b>Clone number</b>	KT38
<b>Immunogen</b>	Recombinant human IgM
<b>Antibody isotype</b>	Mouse IgG1
<b>Antibody form</b>	Intact antibody labelled with horseradish peroxidase
<b>Concentration</b>	1 mg/ml in PBS containing 0.01% thimerosal as a preservative
<b>Cross-reactivity</b>	Not cross-react with human IgG and recombinant human IgG1, IgG2, IgG3, IgG4, IgA and IgE
<b>Applications</b>	Detection antibody for Sandwich ELISA (paired with KT16), ELISA for IgM isotyping

These are applications that have been tested. It does not mean that the antibody cannot be used for other applications

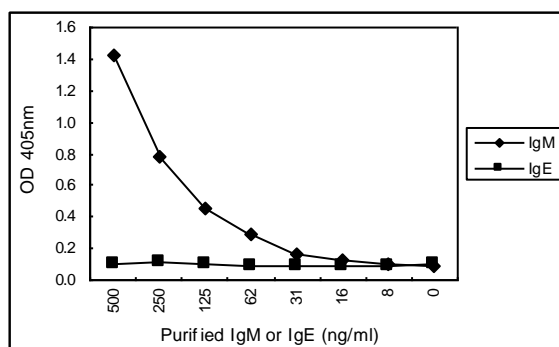


Figure 1. Sandwich ELISA for purified IgM using KT16 coated plate and HRP conjugated KT38. IgE is a negative control.

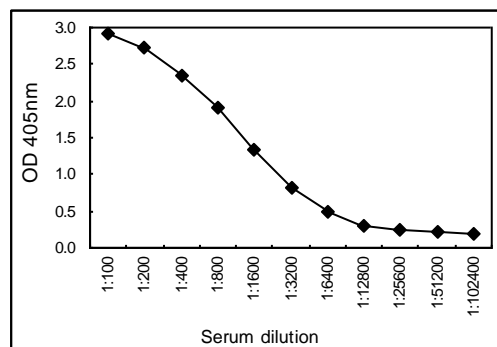


Figure 2. Sandwich ELISA for human serum using KT16 coated plate and HRP conjugated KT38.

<b>Suggested working concentrations</b>	Sandwich ELISA: 1/1000 dilution as detection antibody Optimal concentrations should be determined by the end user
<b>Preparation</b>	IgG is purified through a Protein A column and labelled with horseradish peroxidase
<b>Store</b>	4 °C for 1 month, -20 °C or -80°C in aliquots. Avoid repeated freeze/thaw cycles
<b>Safety information</b>	This product contains thimerosal which is hazardous