

## Product data sheet

<b>Product number</b>	000104A06
<b>Antibody specificity</b>	Ig mu chain C region (IgM)
<b>Species reactivity</b>	Human
<b>UniProt</b>	P01871
<b>Clone number</b>	KT16
<b>Immunogen</b>	Recombinant human IgM
<b>Antibody isotype</b>	Mouse IgG1
<b>Antibody form</b>	Intact antibody
<b>Concentration</b>	1 mg/ml in PBS containing 0.09% sodium azide as a preservative
<b>Cross-reactivity</b>	Not cross-react with human IgG and recombinant human IgG1, IgG2, IgG3, IgG4, IgA and IgE
<b>Applications</b>	Primary antibody for ELISA, capture antibody in sandwich ELISA (paired with KT38/HRP)

These are applications that have been tested. It does not mean that the antibody cannot be used for other applications

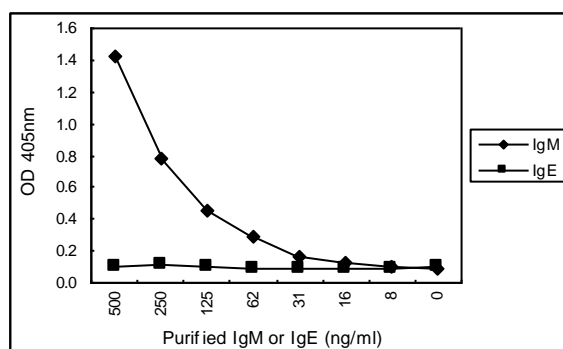


Figure 1. Sandwich ELISA for purified IgM using KT16 coated plate and HRP conjugated KT38. IgE is a negative control.

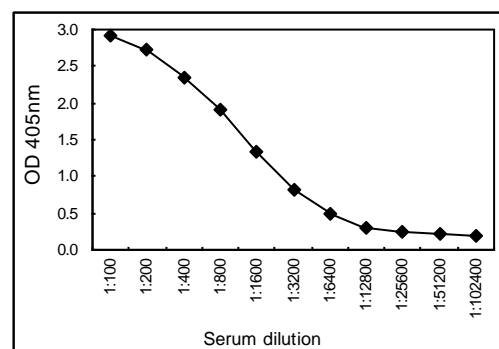


Figure 2. Sandwich ELISA for human serum using KT16 coated plate and HRP conjugated KT38.

<b>Suggested working concentrations</b>	Indirect ELISA: 1 µg/ml Sandwich ELISA: 5 µg/ml
<b>Preparation</b>	IgG is purified through a Protein A column
<b>Store</b>	4 °C for 1 month, -20 °C or -80°C in aliquots. Avoid repeated freeze/thaw cycles
<b>Safety information</b>	This product contains sodium azide which is hazardous