

## Product data sheet

<b>Product number</b>	000104C06
<b>Antibody specificity</b>	Ig alpha-1 chain C region and Ig alpha-2 chain C region (IgA1, IgA2)
<b>Species reactivity</b>	Human
<b>UniProt</b>	P01876, P01877
<b>Clone number</b>	KT41
<b>Immunogen</b>	Recombinant human IgA2
<b>Antibody isotype</b>	Mouse IgG1
<b>Antibody form</b>	Intact antibody
<b>Concentration</b>	1 mg/ml in PBS containing 0.09% sodium azide as a preservative
<b>Cross-reactivity</b>	React with IgA, not cross-react with human IgG and recombinant human IgG1, IgG2, IgG3, IgG4, IgE and IgM
<b>Applications</b>	Capture antibody for sandwich ELISA

These are applications that have been tested. It does not mean that the antibody cannot be used for other applications.

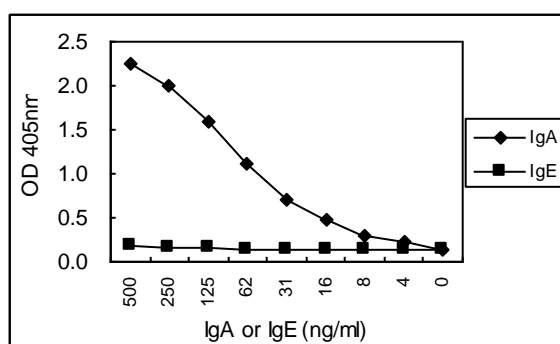


Figure 1. Sandwich ELISA for purified IgA2 using KT41 coated plate and HRP conjugated KT40. IgE is a negative control.

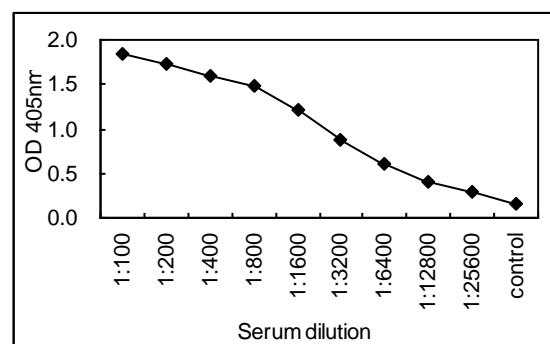


Figure 2. Sandwich ELISA for human serum using KT41 coated plate and HRP conjugated KT40.

<b>Suggested working concentrations</b>	Sandwich ELISA: 5 µg/ml
<b>Preparation</b>	IgG is purified through a Protein A column
<b>Store</b>	4 °C for 1 month, -20 °C or -80°C in aliquots. Avoid repeated freeze/thaw cycles
<b>Safety information</b>	This product contains sodium azide which is hazardous