

## Product data sheet

<b>Product number</b>	010105E10H
<b>Antibody specificity</b>	Complement Factor B (CFB)
<b>Species reactivity</b>	Human
<b>UniProt/GenelD</b>	P00751/629
<b>Clone number</b>	KT24
<b>Immunogen</b>	Purified factor B from human blood
<b>Antibody isotype</b>	Mouse IgG1
<b>Antibody form</b>	Intact antibody labelled with horseradish peroxidase
<b>Concentration</b>	1 mg/ml in PBS containing 0.01% thimerosal as preservative
<b>Cross-reactivity</b>	Not tested
<b>Applications</b>	Detection antibody for sandwich ELISA (paired with KT21)

These are applications that have been tested. It does not mean that the antibody cannot be used for other applications

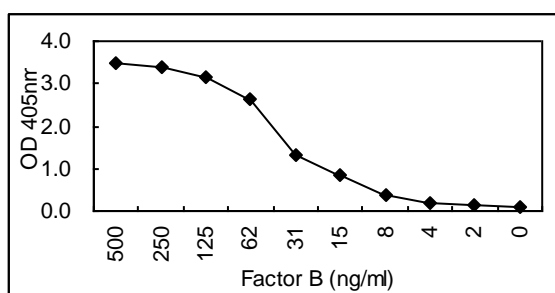


Figure 1. Sandwich ELISA using KT21 coated plate and HRP conjugated KT24.

<b>Suggested working concentrations</b>	1/1000
<b>Preparation</b>	IgG is purified through a Protein A column and then labelled with peroxidase
<b>Store</b>	4 °C for 1 month, -20 °C or -80°C in aliquots. Avoid repeated freeze/thaw cycles
<b>Safety information</b>	This product contains thimerosal which is hazardous