

Product data sheet

Product number	010106E09
Antibody specificity	Ig alpha-1 chain C region and Ig alpha-2 chain C region (IgA1, IgA2)
Species reactivity	Human
UniProt	P01876, P01877
Clone number	KT40
Immunogen	Recombinant human IgA2
Antibody isotype	Mouse IgG1
Antibody form	Intact antibody
Concentration	1 mg/ml in PBS containing 0.09% sodium azide as a preservative
Cross-reactivity	Not cross-react with human IgG1, IgG2, IgG3, IgG4, IgM and IgE

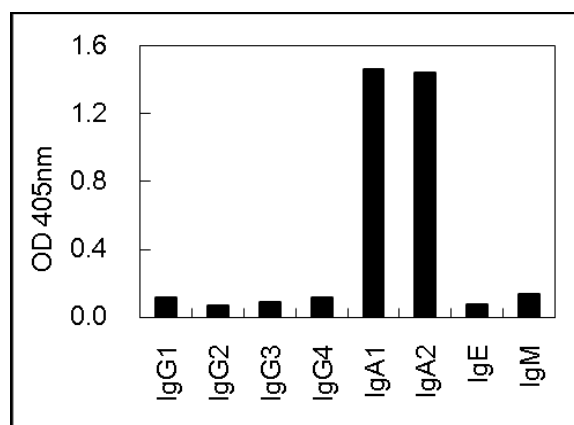


Figure 1. Cross-reactivity of KT40 to immunoglobulins with various isotypes.

Applications	Primary antibody for ELISA These are applications that have been tested. It does not mean that the antibody cannot be used for other applications
Suggested working concentrations	ELISA: 1 µg/ml
Preparation	IgG is purified through a Protein A column
Store	4 °C for 1 month, -20 °C or -80°C in aliquots. Avoid repeated freeze/thaw cycles
Safety information	This product contains sodium azide which is hazardous