

Product data sheet

Product number	010106E09H
Antibody specificity	Ig alpha-1 chain C region and Ig alpha-2 chain C region (IgA1, IgA2)
Species reactivity	Human
UniProt	P01876, P01877
Clone number	KT40
Immunogen	Recombinant human IgA2
Antibody isotype	Mouse IgG1
Antibody form	Intact antibody labelled with horseradish peroxidase
Concentration	1 mg/ml in PBS containing 0.01% thimerosal as a preservative
Cross-reactivity	Not cross-react with recombinant human IgG1, IgG2, IgG3, IgG4, IgM and IgE
Applications	Detection antibody for sandwich ELISA (paired with KT41)

These are applications that have been tested. It does not mean that the antibody cannot be used for other applications

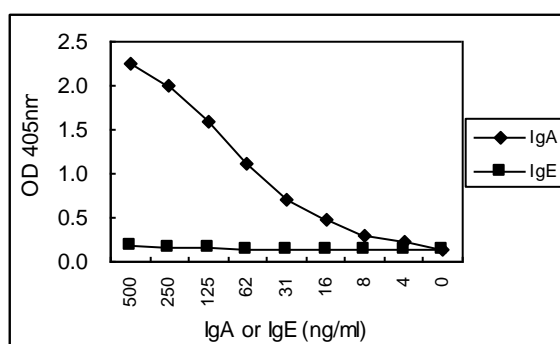


Figure 1. Sandwich ELISA for purified IgA2 using KT41 coated plate and HRP conjugated KT40. IgE is a negative control.

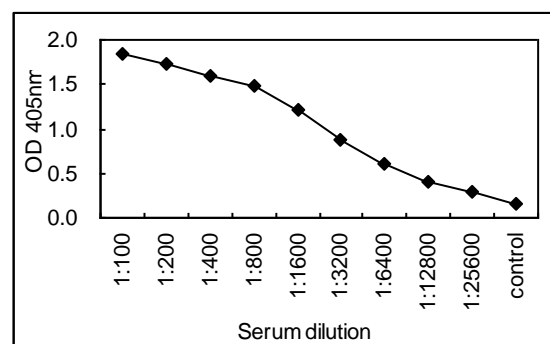


Figure 2. Sandwich ELISA for human serum using KT41 coated plate and HRP conjugated KT40.

Suggested working concentrations	Sandwich ELISA: 1/1000 Optimal concentrations should be determined by the end user
Preparation	IgG is purified through a Protein A column and labelled with horseradish peroxidase
Store	4 °C for 1 month, -20 °C or -80°C in aliquots. Avoid repeated freeze/thaw cycles
Safety information	This product contains 0.01% thimerosal which is hazardous