

## Product data sheet

<b>Product number</b>	010110E04
<b>Antibody specificity</b>	Complement Factor B (CFB)
<b>Species reactivity</b>	Human
<b>UniProt/GenelD</b>	P00751/629
<b>Clone number</b>	KT21
<b>Immunogen</b>	Purified Factor B from human blood
<b>Antibody isotype</b>	Mouse IgG2b
<b>Antibody form</b>	Intact antibody
<b>Concentration</b>	1 mg/ml in PBS containing 0.09% sodium azide as a preservative
<b>Cross-reactivity</b>	Not tested
<b>Applications</b>	Primary antibody for ELISA, capture antibody for sandwich ELISA (paired with KT24/HRP)

These are applications that have been tested. It does not mean that the antibody cannot be used for other applications

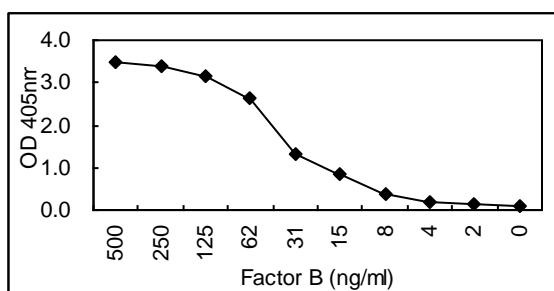


Figure 1. Sandwich ELISA using KT21 coated plate and HRP conjugated KT24.

<b>Suggested working concentrations</b>	ELISA: 1 µg/ml Sandwich ELISA: 5 µg/ml
	Optimal concentrations should be determined by the end user
<b>Preparation</b>	IgG is purified through a Protein A column
<b>Store</b>	4 °C for 1 month, -20 °C or -80°C in aliquots. Avoid repeated freeze/thaw cycles
<b>Safety information</b>	This product contains sodium azide which is hazardous