



Product data sheet

Product number	010707D09
Antibody specificity	Granulocyte-macrophage colony-stimulating factor (GM-CSF)
Species reactivity	Human
UniProt/GenelD	P04141/1437
Clone number	KT37
Immunogen	Recombinant human GM-CSF
Antibody isotype	Rat IgG2a
Antibody form	Intact antibody
Concentration	1 mg/ml in PBS containing 0.09% sodium azide as a preservative
Cross-reactivity	Not tested
Applications	Capture antibody in sandwich ELISA (paired with KT35/HRP)

These are applications that have been tested. It does not mean that the antibody cannot be used for other applications.

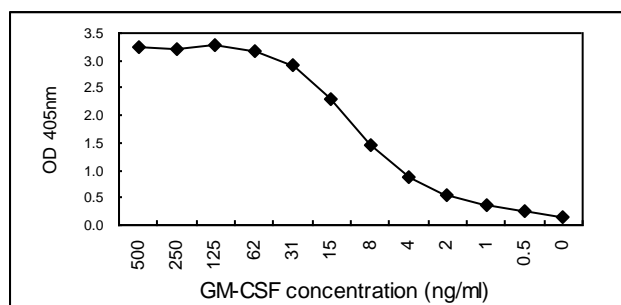


Figure 1. Sandwich ELISA using KT37 and KT35/HRP pairs

Suggested working concentrations	Sandwich ELISA: 1-3 μ g/ml
Preparation	Antibody is purified from culture supernatant using a protein G column
Store	4 °C for 1 month, -20 °C or -80°C in aliquots. Avoid repeated freeze/thaw cycles.
Safety information	This product contains sodium azide which is hazardous

Gentaur USA UK Europe

info@gentaur.com

<https://maxanim.com/gentaur/>