

## Product data sheet

<b>Product number</b>	011311H12
<b>Antibody specificity</b>	Leucine-rich repeat LGI family member 4 (Lgi4)
<b>Species reactivity</b>	Mouse
<b>UniProt/GenelD</b>	Q8K1S1/243914
<b>Clone number</b>	KT18
<b>Immunogen</b>	Mouse Lgi4 peptide coupled to carrier protein
<b>Antibody isotype</b>	Rat IgG1
<b>Antibody form</b>	Intact antibody
<b>Concentration</b>	1 mg/ml in PBS containing 0.1% sodium azide as a preservative
<b>Cross-reactivity</b>	Not tested
<b>Applications</b>	Primary antibody for Western blotting and immunofluorescent staining.

These are applications that have been tested. It does not mean that the antibody cannot be used for other applications.

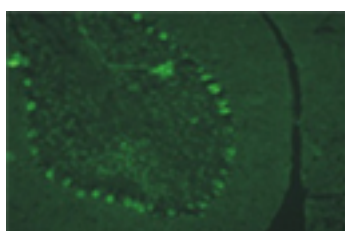


Figure 1. Lgi4 is expressed in Purkinje cells of the cerebellum when detected by KT18. Cryo-section was from adult mouse cerebellum. Courtesy of Dr. Dries Meijer.

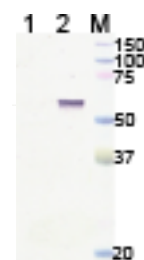


Figure 2. Western blot of whole COS cell extracts using KT18. 1. Cells were transfected with HA-Oct6 as negative control; 2. Cells were transfected with Lgi4-myc expression cassette. Courtesy of Dr. Dries Meijer.

<b>Suggested working concentrations</b>	Western blotting: 1/300 - 1/5000
	Immunofluorescent staining: 1/100
	IHC on cryosections of the cerebellum: 1/100
	IHC on PFA fixed and paraffin embedded cerebellum sectins: 1/100

Optimal concentrations should be determined by the end user

<b>Preparation</b>	Antibody is purified from culture supernatant using a protein G column
--------------------	--

<b>Store</b>	4 °C for 1 month, -20 °C or -80°C in aliquots. Avoid repeated freeze/thaw cycles
--------------	--

<b>Safety information</b>	This product contains sodium azide which is hazardous
---------------------------	---