

## Product data sheet

<b>Product number</b>	020108H05H
<b>Antibody specificity</b>	Serum albumin
<b>Species reactivity</b>	Human
<b>UniProt/GenelD</b>	P02768/213
<b>Clone number</b>	KT32
<b>Immunogen</b>	Human albumin
<b>Antibody isotype</b>	Mouse IgG1
<b>Antibody form</b>	Intact antibody conjugated with horseradish peroxidase
<b>Concentration</b>	1 mg/ml in PBS containing 0.01% thimerosal as a preservative
<b>Cross-reactivity</b>	Not tested
<b>Recommended applications</b>	Detection antibody for sandwich ELISA (paired with KT11)  These are applications that have been tested. It does not mean that the antibody cannot be used for other applications.

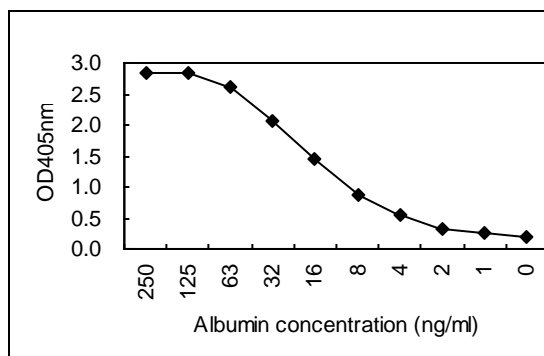


Figure 1. Sandwich ELISA using KT11 and KT32/HRP pairs

<b>Suggested working concentrations</b>	Sandwich ELISA: 1/2000 - 1/4000
<b>Preparation</b>	Antibody is purified through a Protein A column and labelled with horseradish peroxidase.
<b>Store</b>	4 °C for 1 month, -20 °C or -80°C in aliquots. Avoid repeated freeze/thaw cycles
<b>Safety information</b>	This product contains thimerosal which is hazardous