

Product data sheet

Product number	030106B08
Antibody specificity	Pro-epidermal growth factor (EGF)
Species reactivity	Human
UniProt/GenelD	P01133/1950
Clone number	KT57
Immunogen	Recombinant human EGF
Antibody isotype	Mouse IgG1
Antibody form	Intact antibody
Concentration	1 mg/ml in PBS containing 0.09% sodium azide as a preservative
Cross-reactivity	Not tested
Applications	Primary antibody for ELISA and Western blotting; capture antibody for Sandwich ELISA (paired with KT2/HRP)

These are applications that have been tested. It does not mean that the antibody cannot be used for other applications.

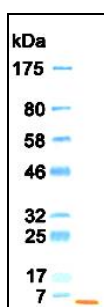


Figure 1. Western blotting result

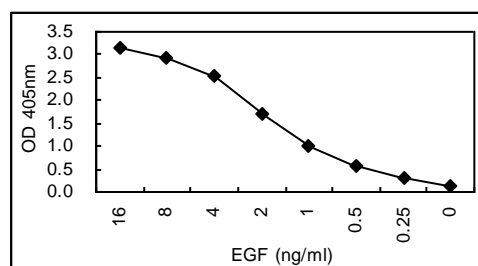


Figure 2. Sandwich ELISA using KT57 coated plate and HRP conjugated KT2.

Suggested working concentrations	ELISA: 1 µg/ml Western blotting: 1/500 - 1/5000 Sandwich ELISA: 0.5-2 µg/ml for coating plates
	Optimal concentrations should be determined by the end user
Preparation	IgG is purified through a Protein A column
Store	4 °C for 1 month, -20 °C or -80°C in aliquots. Avoid repeated freeze/thaw cycles
Safety information	This product contains sodium azide which is hazardous