

Product data sheet

Product number	030115G06
Antibody specificity	Human interleukin-11 (IL-11, IL11)
Species reactivity	Human
UniProt/GenelD	P20809/3589
Clone number	KT8
Immunogen	Recombinant human IL-11
Antibody isotype	Mouse IgG1
Antibody form	Intact antibody
Concentration	1 mg/ml in PBS containing 0.09% sodium azide as a preservative
Cross-reactivity	Not tested
Applications	Primary antibody for ELISA and Western blotting; capture antibody for sandwich ELISA (paired with KT62/HRP)

These are applications that have been tested. It does not mean that the antibody cannot be used for other applications.

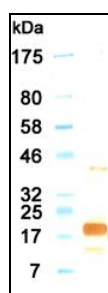


Figure 1. Western blotting result

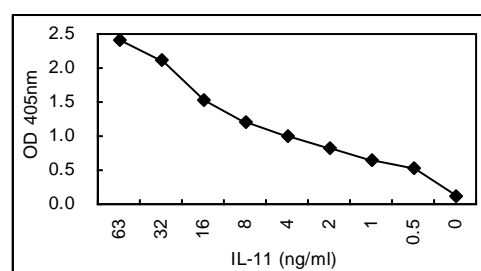


Figure 2. Sandwich ELISA using KT8 coated plate and HRP conjugated KT62.

Suggested working concentrations	ELISA: 1 μ g/ml Western blotting: 1/500 - 1/10000 Sandwich ELISA: 1-3 μ g/ml for coating plates Optimal concentrations should be determined by the end user
Preparation	IgG is purified through a Protein A column
Store	4 °C for 1 month, -20 °C or -80°C in aliquots. Avoid repeated freeze/thaw cycles
Safety information	This product contains sodium azide which is hazardous