



Product data sheet

Product number	030202D04
Antibody specificity	IgG1, IgG2, IgG3 and IgG4
Species reactivity	Human
Clone number	KT47
Immunogen	A fusion protein contains human IgG Fc
Antibody isotype	Mouse IgG1
Antibody form	Intact antibody
Concentration	1 mg/ml in PBS containing 0.09% sodium azide as a preservative
Cross-reactivity	Not cross-react with human IgA, IgE and IgM.
Applications	Primary antibody for ELISA

These are applications that have been tested. It does not mean that the antibody cannot be used for other applications

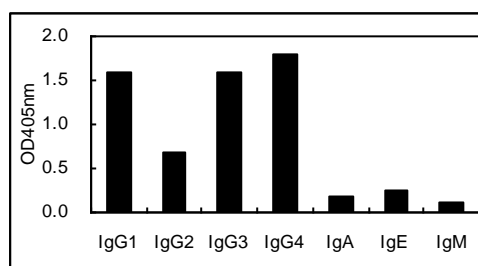


Figure 1. ELISA for immunoglobulin classes and subclasses

Suggested working concentrations	ELISA: 1 μ g/ml Optimal concentrations should be determined by the end user
Preparation	IgG is purified through a Protein A column
Store	4 °C for 1 month, -20 °C or -80°C in aliquots. Avoid repeated freeze/thaw cycles
Safety information	This product contains sodium azide which is hazardous

Gentaur USA UK Europe

info@gentaur.com

<https://maxanim.com/gentaur/>