

## Product data sheet

|                             |  |
|-----------------------------|--|
| <b>Product number</b>       | 030202D04H   |
| <b>Antibody specificity</b> | IgG1, IgG2, IgG3 and IgG4  |
| <b>Species reactivity</b>   | Human  |
| <b>Clone number</b>         | KT47   |
| <b>Immunogen</b>            | A fusion protein contains human IgG Fc                           |
| <b>Antibody isotype</b>     | Mouse IgG1   |
| <b>Antibody form</b>        | Intact antibody labelled with horseradish peroxidase             |
| <b>Concentration</b>        | 1 mg/ml in PBS containing 0.01% thimerosal as a preservative     |
| <b>Cross-reactivity</b>     | Not cross-react with human IgA, IgE and IgM.                     |
| <b>Applications</b>         | Detection antibody for Sandwich ELISA (paired with KT46 or KT48) |

These are applications that have been tested. It does not mean that the antibody cannot be used for other applications

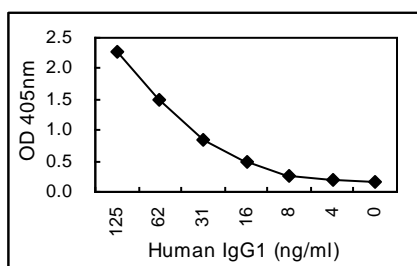


Figure 1. Sandwich ELISA using KT46 coated plate and HRP conjugated KT47.

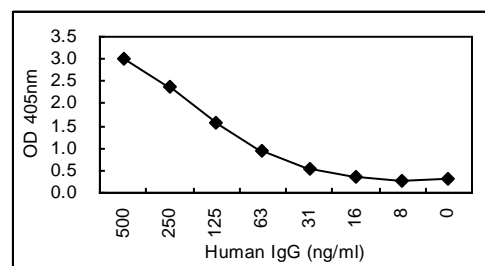


Figure 2. Sandwich ELISA using KT48 coated plate and HRP conjugated KT47.

|   |   |
|---|---|
| <b>Suggested working concentrations</b> | Sandwich ELISA as detection antibody: 1/1000<br>Optimal concentrations should be determined by the end user |
| <b>Preparation</b>                      | IgG is purified through a Protein A column and labelled with horseradish peroxidase                         |
| <b>Store</b>                            | 4 °C for 1 month, -20 °C or -80°C in aliquots. Avoid repeated freeze/thaw cycles                            |
| <b>Safety information</b>               | This product contains thimerosal which is hazardous   |