

Product data sheet

Product number	030502B05
Antibody specificity	Interleukin-6 (IL-6, IL6)
Species reactivity	Human
UniProt/GenelD	P05231/3569
Clone number	KT105
Immunogen	Recombinant human IL-6
Antibody isotype	Mouse IgG2b
Antibody form	Intact antibody
Concentration	1 mg/ml in PBS containing 0.09% sodium azide as a preservative
Cross-reactivity	Not tested
Applications	Primary antibody for ELISA and Western blotting, capture antibody for sandwich ELISA (paired with KT106/HRP)

These are applications that have been tested. It does not mean that the antibody cannot be used for other applications

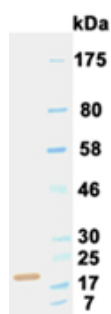


Figure 1. Western blotting result

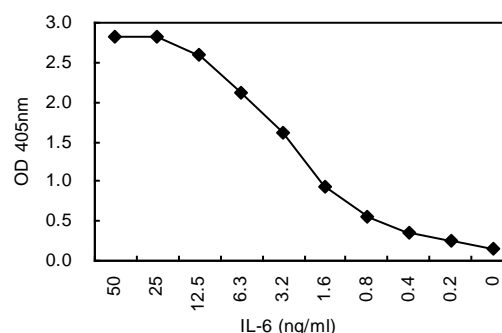


Figure 2. Sandwich ELISA using KT105 and KT106/HRP pairs

Suggested working concentrations	ELISA: 1/1000 Western blotting: 1/500 – 1/5000 Sandwich ELISA: 5 µg/ml for coating plates Optimal concentrations should be determined by the end user
Preparation	IgG is purified through a Protein A column
Store	4 °C for 1 month, -20 °C or -80°C in aliquots. Avoid repeated freeze/thaw cycles
Safety information	This product contains sodium azide which is hazardous