

Product data sheet

Product number	030506B08
Antibody specificity	Interleukin-6 (IL-6, IL6)
Species reactivity	Human
UniProt/GenelD	P05231/3569
Clone number	KT106
Immunogen	Recombinant human IL-6
Antibody isotype	Mouse IgG1
Antibody form	Intact antibody
Concentration	1 mg/ml in PBS containing 0.09% sodium azide as a preservative
Cross-reactivity	Not tested
Applications	ELISA, Western blotting

These are applications that have been tested. It does not mean that the antibody cannot be used for other applications

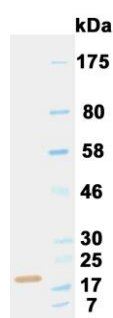


Figure 1. Western blot

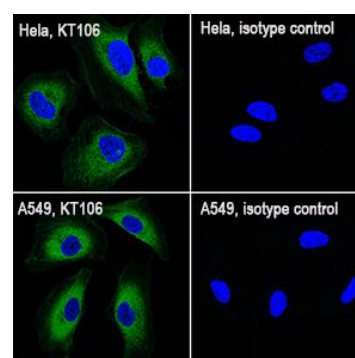


Figure 2. immunofluorescent staining

Suggested working concentrations	Indirect ELISA: 1 μ g/ml Western blotting: 1/500 - 1/10000 Immunofluorescent staining: 1/100 - 1/1000
	Optimal concentrations should be determined by the end user
Preparation	IgG is purified through a Protein A column
Store	4 °C for 1 month, -20 °C or -80°C in aliquots. Avoid repeated freeze/thaw cycles
Safety information	This product contains sodium azide which is hazardous