

## Product data sheet

|                             |  |
|-----------------------------|--|
| <b>Product number</b>       | 030516G02  |
| <b>Antibody specificity</b> | Granulocyte colony-stimulating factor (G-CSF)                  |
| <b>Species reactivity</b>   | Human  |
| <b>UniProt/GenelD</b>       | P09919/1440  |
| <b>Clone number</b>         | KT27   |
| <b>Immunogen</b>            | Recombinant human G-CSF  |
| <b>Antibody isotype</b>     | Mouse IgG2a  |
| <b>Antibody form</b>        | Intact antibody  |
| <b>Concentration</b>        | 1 mg/ml in PBS containing 0.09% sodium azide as a preservative |
| <b>Cross-reactivity</b>     | Not tested   |
| <b>Applications</b>         | Primary antibody for ELISA and Western blotting                |

These are applications that have been tested. It does not mean that the antibody cannot be used for other applications

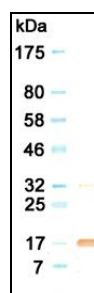


Figure 1. Western blotting result

|   |   |
|---|---|
| <b>Suggested working concentrations</b> | ELISA: 1 $\mu$ g/ml<br>Western blotting: 1/500 – 1/10000<br><br>Optimal concentrations should be determined by the end user |
| <b>Preparation</b>                      | IgG is purified through a Protein A column  |
| <b>Store</b>                            | 4 °C for 1 month, -20 °C or -80°C in aliquots. Avoid repeated freeze/thaw cycles  |
| <b>Safety information</b>               | This product contains sodium azide which is hazardous   |