

## Product data sheet

|                                 |   |
|---------------------------------|---|
| <b>Product number</b>           | 030809A02H  |
| <b>Antibody specificity</b>     | Fibrinogen  |
| <b>Species reactivity</b>       | Human   |
| <b>Clone number</b>             | KT10  |
| <b>Immunogen</b>                | Fibrinogen purified from human blood containing $\alpha$ , $\beta$ and $\gamma$ chains  |
| <b>Antibody isotype</b>         | Rat IgG1  |
| <b>Antibody form</b>            | Intact antibody labelled with horseradish peroxidase  |
| <b>Concentration</b>            | 1 mg/ml in PBS containing 0.01% thimerosal as a preservative  |
| <b>Cross-reactivity</b>         | Not tested  |
| <b>Recommended applications</b> | Detection antibody for sandwich ELISA (paired with KT9)<br><br>These are applications that have been tested. It does not mean that the antibody cannot be used for other applications |

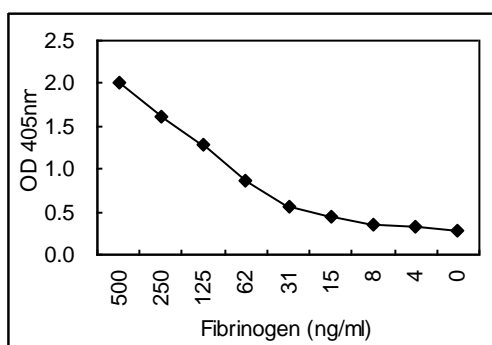


Figure 1. Sandwich ELISA using KT9 coated plate and HRP conjugated KT10.

|   |  |
|---|--|
| <b>Suggested working concentrations</b> | Sandwich ELISA: 1/1000 - 1/4000<br><br>Optimal concentrations should be determined by the end user             |
| <b>Preparation</b>                      | IgG is purified from culture supernatant through a Protein G column and conjugated with horseradish peroxidase |
| <b>Store</b>                            | 4 °C for 1 month, -20 °C or -80°C in aliquots. Avoid repeated freeze/thaw cycles                               |
| <b>Safety information</b>               | This product contains thimerosal which is hazardous  |