

## Product data sheet

<b>Product number</b>	031117E08
<b>Antibody specificity</b>	Kit ligand (SCF)
<b>Species reactivity</b>	Human
<b>UniProt/GenelD</b>	P21583/4254
<b>Clone number</b>	KT118
<b>Immunogen</b>	Recombinant soluble human Kit ligand
<b>Antibody isotype</b>	Rat IgG2a
<b>Antibody form</b>	Intact antibody
<b>Concentration</b>	1 mg/ml in PBS containing 0.09% sodium azide as a preservative
<b>Cross-reactivity</b>	Not tested
<b>Applications</b>	Primary antibody for ELISA; capture antibody for sandwich ELISA (paired with KT117/HRP)

These are applications that have been tested. It does not mean that the antibody cannot be used for other applications

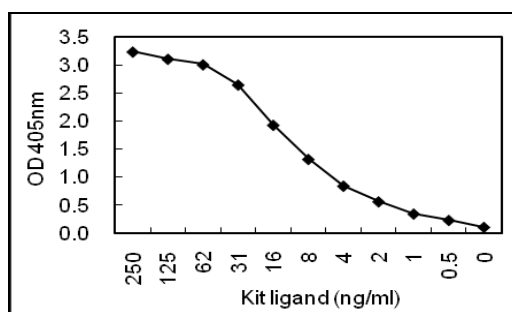


Figure 1. Sandwich ELISA using KT118 coated plate and HRP conjugated KT117.

<b>Suggested working concentrations</b>	ELISA: 1/1000 Sandwich ELISA: 5 µg/ml for coating plates  Optimal concentrations should be determined by the end user
<b>Preparation</b>	IgG is purified through a Protein G column
<b>Store</b>	4 °C for 1 month, -20 °C or -80°C in aliquots. Avoid repeated freeze/thaw cycles
<b>Safety information</b>	This product contains sodium azide which is hazardous