

## Product data sheet

<b>Product number</b>	031801A04
<b>Antibody specificity</b>	Ig gamma-1 chain C region (IgG1)
<b>Species reactivity</b>	Human
<b>Uniprot</b>	P01857
<b>Clone number</b>	KT46
<b>Immunogen</b>	A fusion protein contains human IgG1 Fc
<b>Antibody isotype</b>	Rat IgG2a
<b>Antibody form</b>	Intact antibody
<b>Concentration</b>	1 mg/ml in PBS containing 0.09% sodium azide as a preservative
<b>Cross-reactivity</b>	Not cross-react with human IgG2, IgG3 and IgG4, IgA, IgE and IgM.
<b>Applications</b>	Primary antibody for ELISA; capture antibody for sandwich ELISA (paired with KT47/HRP)

These are applications that have been tested. It does not mean that the antibody cannot be used for other applications

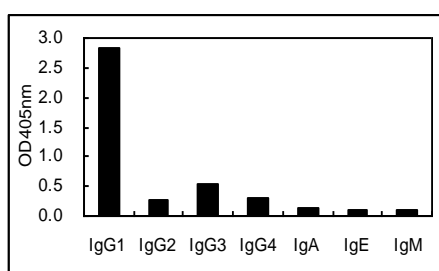


Figure 1. Cross-reactivity test

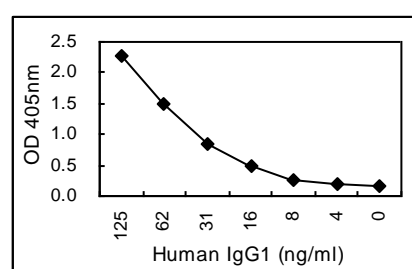


Figure 2. Sandwich ELISA using KT46 coated plate and HRP conjugated KT47.

<b>Suggested working concentrations</b>	ELISA: 1 µg/ml Sandwich ELISA: 5 µg/ml for coating plates
	Optimal concentrations should be determined by the end user
<b>Preparation</b>	IgG is purified through a Protein G column
<b>Store</b>	4 °C for 1 month, -20 °C or -80°C in aliquots. Avoid repeated freeze/thaw cycles
<b>Safety information</b>	This product contains sodium azide which is hazardous