

Product data sheet

Product number	060204E04
Antibody specificity	POU domain, class 3, transcription factor 1 (POU3F1, Oct6)
Species reactivity	Mouse
UniProt/GenelD	P21952/18991
Clone number	KT110
Immunogen	Recombinant mouse Oct6
Antibody isotype	Mouse IgG1
Antibody form	Intact antibody
Concentration	1 mg/ml in PBS containing 0.09% sodium azide as a preservative
Cross-reactivity	Not tested
Applications	Western blotting; The antibody also recognizes the native endogenous protein in an electrophoretic mobility assay.

These are applications that have been tested. It does not mean that the antibody cannot be used for other applications

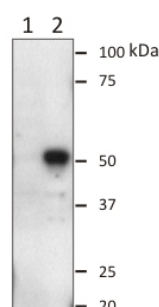


Figure 1. Western blotting using KT110. Lane 1. RT4D6 (Schwannoma cell line) nuclear extract immune-depleted for Oct6. Lane 2. RT4D6 nuclear extract. Courtesy of Dr. Dies Meijer from Erasmus University.

Suggested working concentrations	Western blotting: 1/500 – 1/5000 Optimal concentrations should be determined by the end user
Preparation	IgG is purified through a Protein A column
Store	4 °C for 1 month, -20 °C or -80°C in aliquots. Avoid repeated freeze/thaw cycles
Safety information	This product contains sodium azide which is hazardous