

Product data sheet

Product number	062607A06
Antibody specificity	Immunoglobulin J chain (IGJ)
Species reactivity	Human
UniProt/GenelD	P01591/3512
Clone number	KT109
Immunogen	Recombinant human J chain
Antibody isotype	Mouse IgG2b
Antibody form	Intact antibody
Concentration	1 mg/ml in PBS containing 0.09% sodium azide as a preservative
Cross-reactivity	Not tested
Applications	Primary antibody for ELISA, Western blotting and immunohistochemistry

These are applications that have been tested. It does not mean that the antibody cannot be used for other applications.

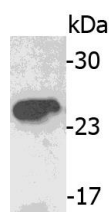


Figure 1. Western blotting using saliva

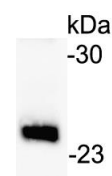


Figure 2. Western blotting using purified serum IgA.

Suggested working concentrations	ELISA: 1/1000 Western blotting: 1/500 – 1/10000 Immunohistochemistry: 1/100
	Optimal concentrations should be determined by the end user
Preparation	IgG is purified through a Protein A column
Store	4 °C for 1 month, -20 °C or -80°C in aliquots. Avoid repeated freeze/thaw cycles
Safety information	This product contains sodium azide which is hazardous