

## Product data sheet

<b>Product number</b>	068709G12
<b>Antibody specificity</b>	Ig gamma-4 chain C region (human IgG4)
<b>Species reactivity</b>	Human
<b>UniProt</b>	P01861
<b>Clone number</b>	KT130
<b>Immunogen</b>	Human IgG4
<b>Antibody isotype</b>	Mouse IgG1
<b>Antibody form</b>	Intact antibody
<b>Concentration</b>	1 mg/ml in PBS containing 0.09% sodium azide as a preservative
<b>Cross-reactivity</b>	Not cross-react with human IgG1, IgG2, IgG3, IgA, IgE and IgM
<b>Applications</b>	Primary antibody for ELISA and Western blotting. Capture antibody for sandwich ELISA. Antibody isotyping.

These are applications that have been tested. It does not mean that the antibody cannot be used for other applications

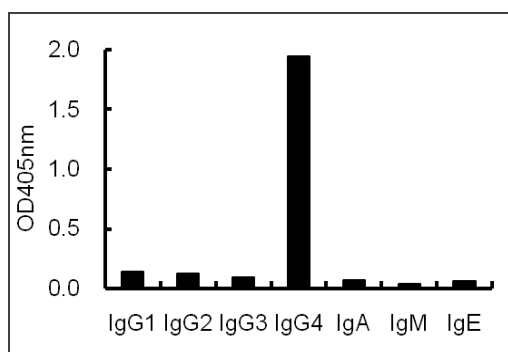


Figure 1. ELISA using plates coated with human antibodies with various isotypes.

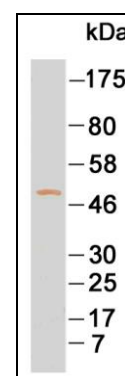


Figure 2. Western blotting using purified IgG4 under reducing conditions

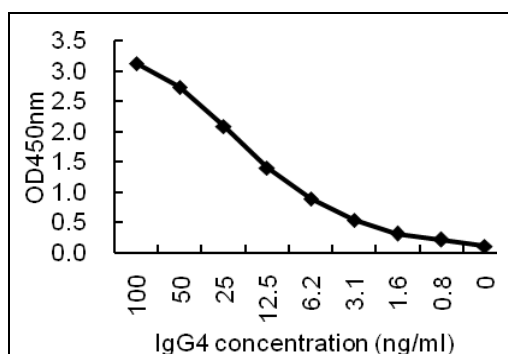


Figure 3. Sandwich ELISA for purified IgG4 using KT130 coated plate and HRP conjugated KT132.

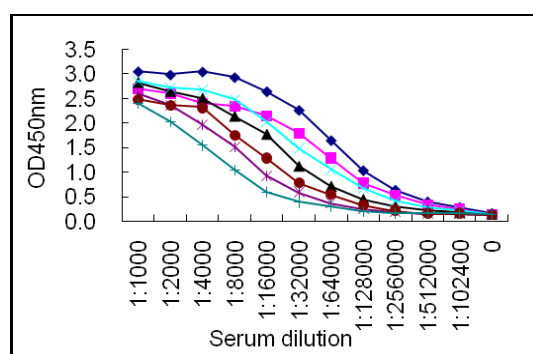


Figure 4. Sandwich ELISA for normal human serum samples using KT130 coated plate and HRP conjugated KT132.



**Suggested working concentrations**

ELISA: 1/1000  
Western blotting: 1/500 - 1/10000  
Capture antibody: 5 µg/ml

Optimal concentrations should be determined by the end user

**Preparation**

IgG is purified through a Protein A column

**Store**

4 °C for 1 month, -20 °C or -80°C in aliquots. Avoid repeated freeze/thaw cycles

**Safety information**

This product contains sodium azide which is hazardous

**Gentaur USA UK Europe**

[info@gentaur.com](mailto:info@gentaur.com)

<https://maxanim.com/gentaur/>