

Product data sheet

Product number	068715G06
Antibody specificity	IgG1, IgG2, IgG3, IgG4
Species reactivity	Human
Clone number	KT131
Immunogen	Human IgG
Antibody isotype	Mouse IgG2a
Antibody form	Intact antibody
Concentration	1 mg/ml in PBS containing 0.09% sodium azide as a preservative
Cross-reactivity	Not cross-react with human IgA, IgE and IgM
Applications	Primary antibody for ELISA and Western blotting. Capture antibody for sandwich ELISA.

These are applications that have been tested. It does not mean that the antibody cannot be used for other applications

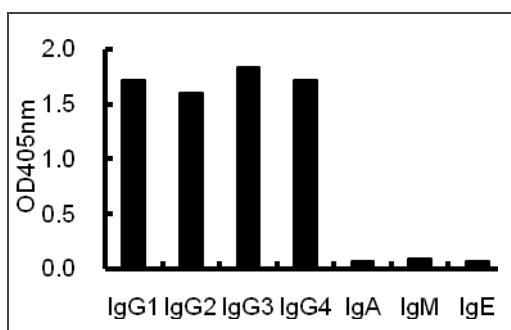


Figure 1. ELISA using plates coated with human antibodies with various isotypes.

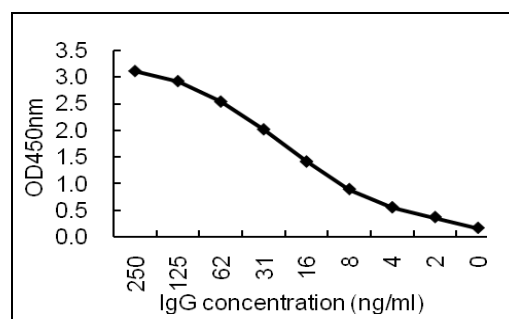


Figure 2. Sandwich ELISA for purified IgG using KT131 coated plate and HRP conjugated KT132.

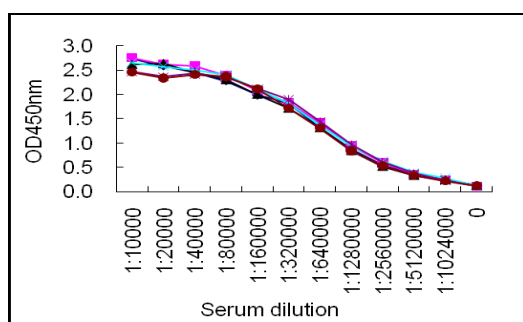


Figure 3. Sandwich ELISA for normal human serum samples using KT131 coated plate and HRP conjugated KT132.

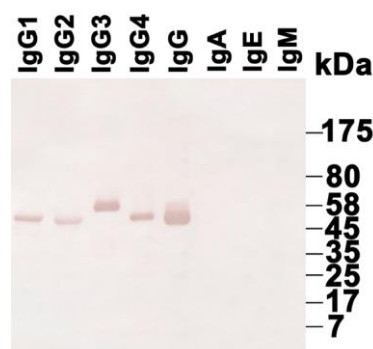


Figure 4. Western blotting using purified immunoglobulins.



Suggested working concentrations

ELISA: 1/1000
Western blotting: 1/500 - 1/10000
Capture antibody: 5 µg/ml

Optimal concentrations should be determined by the end user

Preparation

IgG is purified through a Protein A column

Store

4 °C for 1 month, -20 °C or -80°C in aliquots. Avoid repeated freeze/thaw cycles

Safety information

This product contains sodium azide which is hazardous

Gentaur USA UK Europe

info@gentaur.com

<https://maxanim.com/gentaur/>