

Product data sheet

| | |
|-----------------------------|--|
| Product number | 068812D06 |
| Antibody specificity | Ig gamma-2 chain C region (human IgG2) |
| Species reactivity | Human |
| UniProt | P01859 |
| Clone number | KT138 |
| Immunogen | Human IgG2 |
| Antibody isotype | Mouse IgG1 |
| Antibody form | Intact antibody |
| Concentration | 1 mg/ml in PBS containing 0.09% sodium azide as a preservative |
| Cross-reactivity | Not cross-react with human IgG1, IgG3, IgG4, IgA, IgE and IgM |
| Applications | Primary antibody for ELISA. antibody isotyping. |

These are applications that have been tested. It does not mean that the antibody cannot be used for other applications

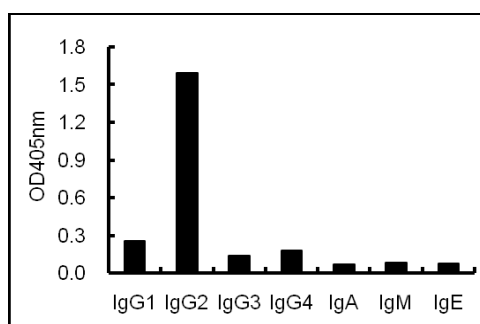


Figure 1. ELISA using plates coated with human antibodies with various isotypes.

| | |
|---|--|
| Suggested working concentrations | ELISA: 1/1000 Optimal concentrations should be determined by the end user |
| Preparation | IgG is purified through a Protein A column |
| Store | 4 °C for 1 month, -20 °C or -80°C in aliquots. Avoid repeated freeze/thaw cycles |
| Safety information | This product contains sodium azide which is hazardous |