

## Product data sheet

<b>Product number</b>	068909H08
<b>Antibody specificity</b>	Ig gamma-3 chain C region (human IgG3)
<b>Species reactivity</b>	Human
<b>UniProt</b>	P01860
<b>Clone number</b>	KT133
<b>Immunogen</b>	Human IgG3
<b>Antibody isotype</b>	Mouse IgG1
<b>Antibody form</b>	Intact antibody
<b>Concentration</b>	1 mg/ml in PBS containing 0.09% sodium azide as a preservative
<b>Cross-reactivity</b>	Not cross-react with human IgG1, IgG2, IgG4, IgA, IgE and IgM
<b>Applications</b>	Primary antibody for ELISA. Capture antibody for sandwich ELISA. Antibody isotyping.

These are applications that have been tested. It does not mean that the antibody cannot be used for other applications

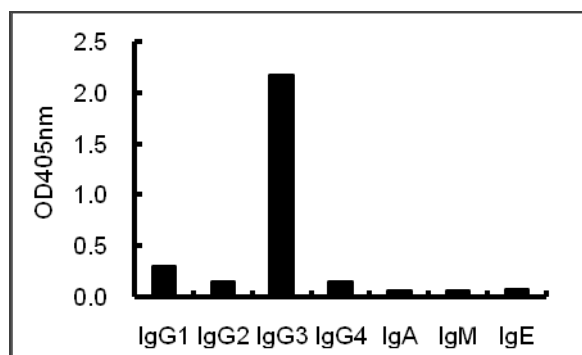


Figure 1. ELISA using plates coated with human antibodies with various isotypes.

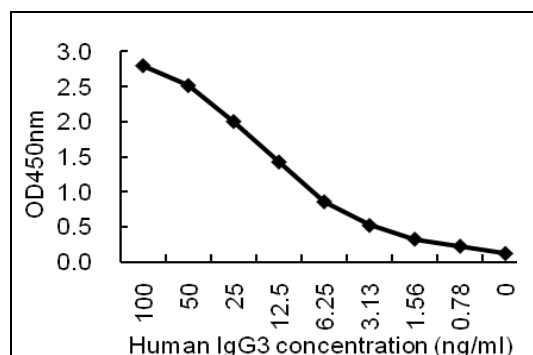
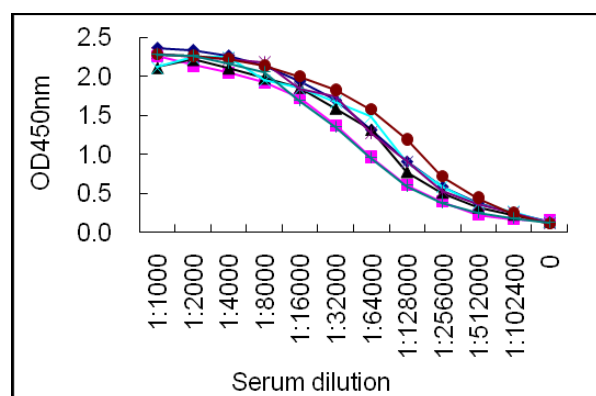


Figure 2. Sandwich ELISA for purified IgG3 using KT133 coated plate and HRP conjugated KT131.





using KT133 coated plate and HRP conjugated KT131.

<b>Suggested working concentrations</b>	ELISA: 1/1000 Capture antibody: 5 µg/ml  Optimal concentrations should be determined by the end user
<b>Preparation</b>	IgG is purified through a Protein A column
<b>Store</b>	4 °C for 1 month, -20 °C or -80°C in aliquots. Avoid repeated freeze/thaw cycles
<b>Safety information</b>	This product contains sodium azide which is hazardous