

## Product data sheet

|                             |  |
|-----------------------------|--|
| <b>Product number</b>       | 069203C11  |
| <b>Antibody specificity</b> | Alpha-fetoprotein (AFP)  |
| <b>Species reactivity</b>   | Human  |
| <b>UniProt/GenelD</b>       | P02771/174   |
| <b>Clone number</b>         | KT137  |
| <b>Immunogen</b>            | Purified native human AFP                                      |
| <b>Antibody isotype</b>     | Mouse IgG1   |
| <b>Antibody form</b>        | Intact antibody  |
| <b>Concentration</b>        | 1 mg/ml in PBS containing 0.09% sodium azide as a preservative |
| <b>Cross-reactivity</b>     | Not tested   |
| <b>Applications</b>         | Capture antibody for sandwich ELISA.                           |

These are applications that have been tested. It does not mean that the antibody cannot be used for other applications

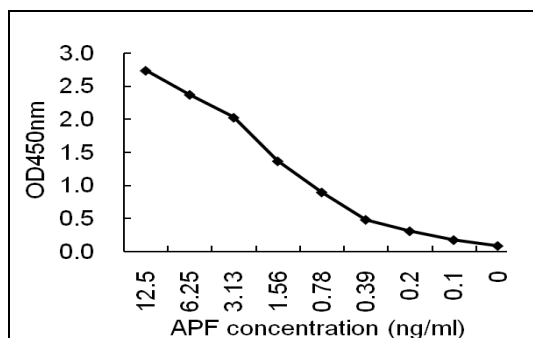


Figure 1. Sandwich ELISA using KT137 coated plate and HRP conjugated KT136.

|   |  |
|---|--|
| <b>Suggested working concentrations</b> | Capture antibody: 3 µg/ml<br>Optimal concentrations should be determined by the end user |
| <b>Preparation</b>                      | IgG is purified through a Protein A column   |
| <b>Store</b>                            | 4 °C for 1 month, -20 °C or -80°C in aliquots. Avoid repeated freeze/thaw cycles         |
| <b>Safety information</b>               | This product contains sodium azide which is hazardous                                    |