

Product data sheet

Product number	110308A10
Antibody specificity	IgG1, IgG2, IgG3 and IgG4
Species reactivity	Human
Clone number	KT48
Immunogen	A fusion protein contains human IgG Fc
Antibody isotype	Rat IgG2a
Antibody form	Intact antibody
Concentration	1 mg/ml in PBS containing 0.09% sodium azide as a preservative
Cross-reactivity	Not cross-react with human IgA, IgE and IgM.
Applications	Primary antibody for ELISA; capture antibody for sandwich ELISA (paired with KT47/HRP)

These are applications that have been tested. It does not mean that the antibody cannot be used for other applications

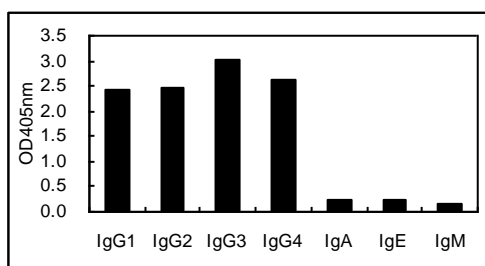


Figure 1. Cross-reactivity test

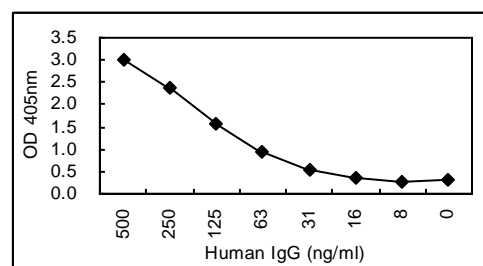


Figure 2. Sandwich ELISA using KT48 coated plate and HRP conjugated KT47.

Suggested working concentrations	ELISA: 1 μ g/ml Sandwich ELISA: 5 μ g/ml for coating plates
	Optimal concentrations should be determined by the end user
Preparation	IgG is purified through a Protein G column
Store	4 $^{\circ}$ C for 1 month, -20 $^{\circ}$ C or -80 $^{\circ}$ C in aliquots. Avoid repeated freeze/thaw cycles
Safety information	This product contains sodium azide which is hazardous