



## Product data sheet

<b>Product number</b>	111614A09
<b>Antibody specificity</b>	HA tag
<b>Clone number</b>	KT25
<b>Immunogen</b>	YPYDVPDYA peptide conjugated to carrier protein
<b>Antibody isotype</b>	Mouse IgG1
<b>Antibody form</b>	Intact antibody
<b>Concentration</b>	1 mg/ml in PBS containing 0.09% sodium azide as a preservative
<b>Cross-reactivity</b>	Not tested
<b>Applications</b>	Primary antibody for ELISA and Western blotting

These are applications that have been tested. It does not mean that the antibody cannot be used for other applications

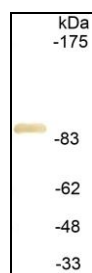


Figure 1. Western blot for a protein with HA tag

<b>Suggested working concentrations</b>	ELISA: 1 $\mu$ g/ml Western blotting: 1/1000 - 1/20000  Optimal concentrations should be determined by the end user
<b>Preparation</b>	Antibody is purified from culture supernatant by a Protein A column
<b>Store</b>	4 °C for 1 month, -20 °C or -80°C in aliquots. Avoid repeated freeze/thaw cycles
<b>Safety information</b>	This product contains sodium azide which is hazardous

Gentaur USA UK Europe

[info@gentaur.com](mailto:info@gentaur.com)

<https://maxanim.com/gentaur/>