

## Product data sheet

<b>Product number</b>	115604G07
<b>Antibody specificity</b>	Ig alpha-1 chain C region and Ig alpha-2 chain C region (IgA1, IgA2)
<b>Species reactivity</b>	Human
<b>UniProt</b>	P01876, P01877
<b>Clone number</b>	KT153
<b>Immunogen</b>	IgA2 hinge region peptide CHVKHYTNPSQDVTVPCPVPPPPPCCH conjugated to carrier protein
<b>Antibody isotype</b>	Mouse IgG2b
<b>Antibody form</b>	Intact antibody
<b>Concentration</b>	1 mg/ml in PBS containing 0.09% sodium azide as a preservative
<b>Cross-reactivity</b>	React with IgA1 and IgA2, not cross-react with human IgG and recombinant human IgG1, IgG2, IgG3, IgG4, IgE and IgM
<b>Applications</b>	Primary antibody for ELISA and Western blotting

These are applications that have been tested. It does not mean that the antibody cannot be used for other applications.

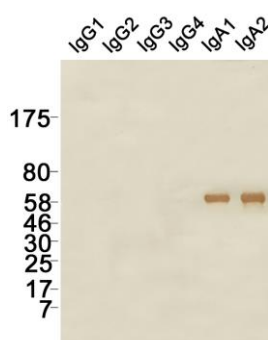


Figure 1. Western blotting of KT153 to human IgG and IgA

<b>Suggested working concentrations</b>	ELISA: 1 µg/ml Western blotting: 1/1000 – 1/20000  Optimal concentrations should be determined by the end user
<b>Preparation</b>	IgG is purified through a Protein A column
<b>Store</b>	4 °C for 1 month, -20 °C or -80°C in aliquots. Avoid repeated freeze/thaw cycles
<b>Safety information</b>	This product contains sodium azide which is hazardous