

Product data sheet

Product number	116111C10
Antibody specificity	Ig kappa chain C region (mouse Ig κ light chain)
Species reactivity	Mouse
UniProt	P01837
Clone number	KT128
Immunogen	Mouse IgG
Antibody isotype	Rat IgG2a
Antibody form	Intact antibody
Concentration	1 mg/ml in PBS containing 0.09% sodium azide as a preservative
Cross-reactivity	Not react with mouse Ig λ light chain
Applications	ELISA, Western blotting, antibody isotyping

These are applications that have been tested. It does not mean that the antibody cannot be used for other applications

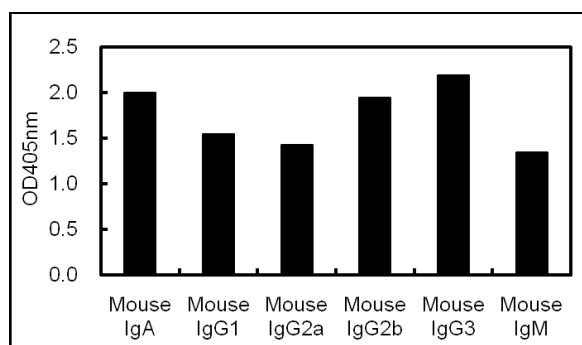


Figure 1. ELISA using plates coated with various mouse antibodies with kappa light chains. KT128 is used as primary antibody and peroxidase conjugated KT97 is used as secondary antibody.

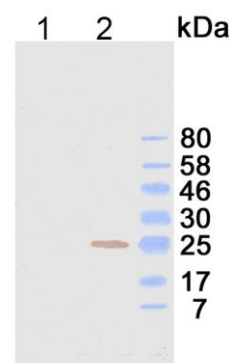


Figure 2. Western blotting using KT128. Lane 1. mouse antibody with λ light chain; Lane 2. mouse antibody with κ light chain. KT128 is used as primary antibody and peroxidase conjugated KT97 is used as secondary antibody.

Suggested working concentrations	ELISA: 1/1000 Western blotting: 1/500 – 1/10000
	Optimal concentrations should be determined by the end user
Preparation	IgG is purified through a Protein G column
Store	4 °C for 1 month, -20 °C or -80°C in aliquots. Avoid repeated freeze/thaw cycles
Safety information	This product contains sodium azide which is hazardous