

Product data sheet

| | |
|-----------------------------|----------------------------------------------------------------|
| Product number | 116816G10 |
| Antibody specificity | Troponin I, cardiac muscle (cTnI) |
| Species reactivity | Human cardiac troponin I |
| UniProt/GenelD | P19429/7137 |
| Clone number | KT143 |
| Immunogen | Purified human cardiac troponin I |
| Antibody isotype | Mouse IgG2b |
| Antibody form | Intact antibody |
| Concentration | 1 mg/ml in PBS containing 0.09% sodium azide as a preservative |
| Cross-reactivity | Not tested |
| Applications | ELISA, Western blotting, capture antibody for sandwich ELISA. |

These are applications that have been tested. It does not mean that the antibody cannot be used for other applications

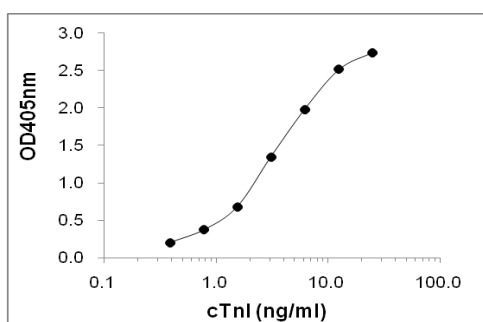


Figure 1. Sandwich ELISA using KT143 coated plate and HRP conjugated KT142

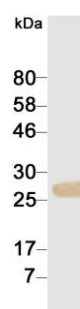


Figure 2. Western blotting result

| | |
|-----------------------------------------|-------------------------------------------------------------------------------------------------------------------------------------------------------------------|
| Suggested working concentrations | <p>ELISA: 1 µg/ml</p> <p>Western blotting: 1/500 - 1/5000</p> <p>Capture antibody: 1 µg/ml</p> <p>Optimal concentrations should be determined by the end user</p> |
| Preparation | IgG is purified through a Protein A column |
| Store | 4 °C for 1 month, -20 °C or -80°C in aliquots. Avoid repeated freeze/thaw cycles |
| Safety information | This product contains sodium azide which is hazardous |