

Product datasheet

Product number	118413F05
Antibody specificity	Human brain S100 beta (S100B)
Species reactivity	Human
UniProt/GenelD	P04271/6285
Clone number	KT170
Immunogen	Recombinant human brain S100 beta
Antibody isotype	Mouse IgG1
Antibody form	Intact antibody
Concentration	1 mg/ml in PBS containing 0.09% sodium azide as a preservative
Cross-reactivity	Not tested
Applications	ELISA, capture antibody for sandwich ELISA.

These are applications that have been tested. It does not mean that the antibody cannot be used for other applications

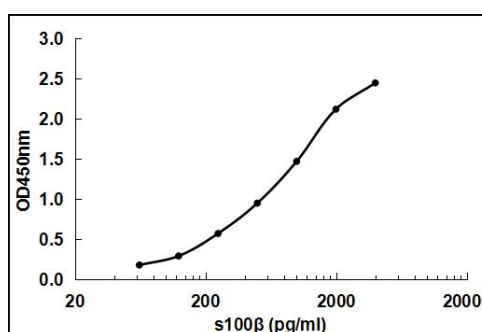


Figure 1. Sandwich ELISA using KT170 as capture antibody and HRP conjugated KT169 as detection antibody

Suggested working concentrations	ELISA: 1 µg/ml Sandwich ELISA: 5 µg/ml
	Optimal concentrations should be determined by the end user
Preparation	IgG is purified through a Protein A column
Store	4 °C for 1 month, -20 °C or -80 °C for long term. Avoid repeated freeze/thaw cycles
Safety information	This product contains sodium azide which is hazardous