

Product data sheet

Product number	161601D09H
Antibody specificity	Ig kappa chain C region (Kappa light chain)
Species reactivity	Rat
Clone number	KT102
Antibody isotype	Mouse IgG1
Antibody form	Intact antibody labelled with horseradish peroxidase
Concentration	1 mg/ml in PBS containing 0.01% thimerosal as a preservative
Cross-reactivity	Not cross-react with rabbit, goat and human IgG, mouse IgG and IgM
Applications	Detection antibody for ELISA, Western blotting and antibody isotyping
	These are applications that have been tested. It does not mean that the antibody cannot be used for other applications

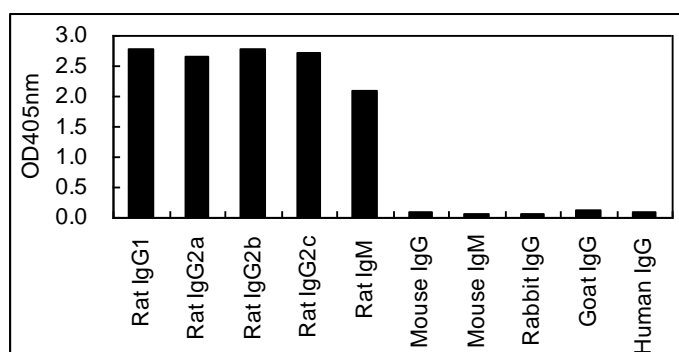


Figure 1. ELISA for cross-reactivity to various immunoglobulins

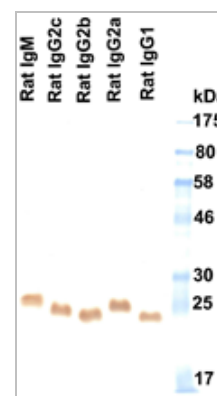


Figure 2. Western blotting to rat immunoglobulins under reducing condition

Suggested working concentrations	ELISA: 1/2000 Western blotting: 1/500 – 1/10000 Optimal concentrations should be determined by the end user
Preparation	IgG is purified through a Protein A column and labelled with horseradish peroxidase
Store	4 °C for 1 month, -20 °C or -80°C in aliquots. Avoid repeated freeze/thaw cycles
Safety information	This product contains thimerosal which is hazardous