



Product data sheet

Product number	1617006E05
Antibody specificity	GAPDH
Species reactivity	Human, other species with conserved ATQKTVDGSPGKLWRDGRGA sequence
UniProt/GenelD	P04406/2597
Clone number	KT187
Immunogen	ATQKTVDGSPGKLWRDGRGA peptide conjugated to carrier protein
Antibody isotype	Mouse IgG1
Antibody form	Intact antibody
Concentration	1 mg/ml in PBS containing 0.09% sodium azide as a preservative
Cross-reactivity	Not tested
Applications	Primary antibody for Western blotting

These are applications that have been tested. It does not mean that the antibody cannot be used for other applications

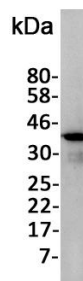


Figure 1. Western blotting against total protein from A375 cell lysate

Suggested working concentrations	Western blotting: 1/1000 – 1/10000 Optimal concentrations should be determined by the user
Preparation	IgG is purified using a Protein A column
Store	4 °C for 1 month, -20 °C or -80°C in aliquots. Avoid repeated freeze/thaw cycles
Safety information	This product contains sodium azide which is hazardous
Disclaimer	This product is intended for research use only.

Gentaur USA UK Europe

info@gentaur.com

<https://maxanim.com/gentaur/>