

## Product data sheet

<b>Product number</b>	163404B07
<b>Antibody specificity</b>	Microtubule-associated protein RP/EB family member 3 (MAPRE3, EB3) with S162 phosphorylated
<b>Species reactivity</b>	Human
<b>UniProt/GenelD</b>	Q9UPY8/22924
<b>Clone number</b>	KT114
<b>Immunogen</b>	S162 phosphorylated EB3 peptide conjugated to carrier protein
<b>Antibody isotype</b>	Mouse IgG2b
<b>Antibody form</b>	Intact antibody
<b>Concentration</b>	1 mg/ml in PBS containing 0.09% sodium azide as a preservative
<b>Cross-reactivity</b>	Not cross-react with EB3 not phosphorylated at S162
<b>Applications</b>	Primary antibody for Western blotting and immunohistochemistry.

These are applications that have been tested. It does not mean that the antibody cannot be used for other applications.

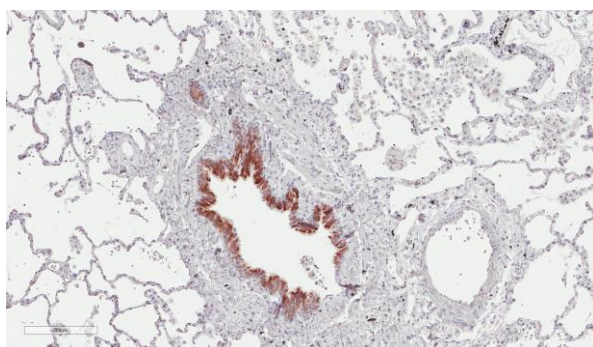


Figure 1. Immunohistochemistry of human lung. Courtesy of Dr. Yulia Komarova.

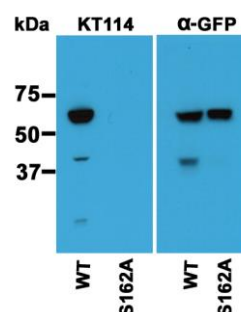


Figure 2. Western blotting using lysates of HEK cells expressing wild type EB3 (WT, most S162 was phosphorylated) and none phosphorylated EB3 (S162A). WT EB3 and S162A EB3 were expressed as fusion proteins with GFP. The bands were detected using KT114 and anti-GFP antibodies. Courtesy of Dr. Yulia Komarova.

<b>Suggested working concentrations</b>	Western blotting: 1/500 - 1/20000 Immunohistochemistry: 1/200 - 1/5000  Optimal concentrations should be determined by the end user
<b>Preparation</b>	Antibody is purified from culture supernatant using a protein A column
<b>Store</b>	4 °C for 1 month, -20 °C or -80°C in aliquots. Avoid repeated freeze/thaw cycles.
<b>Safety information</b>	This product contains sodium azide which is hazardous