

## Product data sheet

<b>Product number</b>	167214B12
<b>Antibody specificity</b>	Beta-2-microglobulin (B2M)
<b>Species reactivity</b>	Human
<b>UniProt/GenelD</b>	P61769/567
<b>Clone number</b>	KT134
<b>Immunogen</b>	Purified native human B2M
<b>Antibody isotype</b>	Mouse IgG1
<b>Antibody form</b>	Intact antibody
<b>Concentration</b>	1 mg/ml in PBS containing 0.09% sodium azide as a preservative
<b>Cross-reactivity</b>	Not tested
<b>Applications</b>	Primary antibody for ELISA, Western blotting and sandwich ELISA.

These are applications that have been tested. It does not mean that the antibody cannot be used for other applications

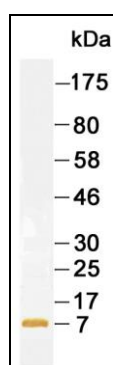


Figure 1. Western blotting using purified B2M.

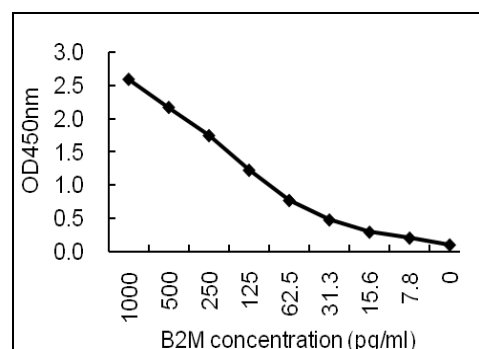


Figure 2. Sandwich ELISA for purified B2M using KT134 coated plate and HRP conjugated KT135.

<b>Suggested working concentrations</b>	<p>ELISA: 1/1000</p> <p>Western blotting: 1/500 - 1/10000</p> <p>Capture antibody: 3 µg/ml</p> <p>Optimal concentrations should be determined by the end user</p>
<b>Preparation</b>	IgG is purified through a Protein A column
<b>Store</b>	4 °C for 1 month, -20 °C or -80°C in aliquots. Avoid repeated freeze/thaw cycles
<b>Safety information</b>	This product contains sodium azide which is hazardous