

Product datasheet

Product number	169213F10H
Antibody specificity	Human alpha-1-microglobulin (A1M)
Species reactivity	Human
UniProt/GenelD	P02760/259
Clone number	KT158
Immunogen	Native human alpha-1-microglobulin
Antibody isotype	Mouse IgG2b
Antibody form	Intact antibody labelled with horseradish peroxidase
Concentration	1 mg/ml in PBS containing 0.01% thimerosal as a preservative
Cross-reactivity	Not tested
Applications	Western blotting, detection antibody for sandwich ELISA (paired with KT157). These are applications that have been tested. It does not mean that the antibody cannot be used for other applications

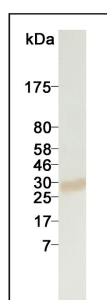


Figure 1. Western blotting using purified α 1M.

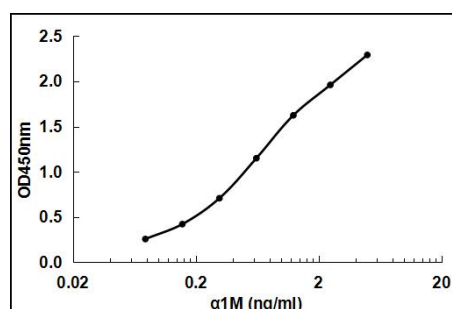


Figure2. Sandwich ELISA using KT157 as capture antibody and HRP conjugated KT158 as detection antibody

Suggested working concentrations	Sandwich ELISA: 1 μ g/ml Western blotting: 1 μ g/ml Optimal concentrations should be determined by the end user
Preparation	IgG is purified through a Protein A column and labelled with horseradish peroxidase
Store	4 $^{\circ}$ C for 1 month, -20 $^{\circ}$ C or -80 $^{\circ}$ C for long term. Avoid repeated freeze/thaw cycles
Safety information	This product contains thimerosal which is hazardous