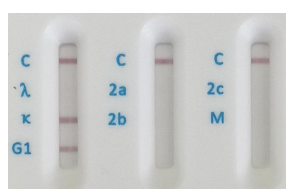


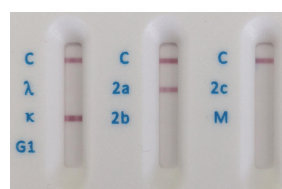
Product information

- Product number** ISOTYPE02
- Description** This card is used for isotyping rat monoclonal antibodies including IgG1, IgG2a, IgG2b, IgG2c and IgM heavy chains and kappa and lambda light chains. It is simple to use and can get results within 5 minutes.
- Storage condition** Store at room temperature for 2 months. For longer use, the card can be stored at 4 to 8°C.
- Instruction of use**
1. Prepare samples to be tested. Samples can be rat monoclonal antibodies in cell culture or in purified forms. The suggested detection range is between 0.5 µg/mL - 10 µg/mL. If antibody concentration is too high, please dilute the sample either using phosphate buffered saline (PBS), pH 7.4 or just simply using deionized water. The total volume of the sample should be more than 180 µL.
 2. Open the bag and take the card out. The card should be used within 30 minutes.
 3. Write the sample ID and date on the card.
 4. The card has 3 oval-shaped wells. Add 60 µL of sample to each well. Wait 2 to 5 minutes until the positive control bands (marked with C) appeared.
 5. The band at the corresponding position indicates the antibody isotype, i.e, G1 (IgG1), 2a (IgG2a), 2b (IgG2b), 2c (IgG2c), M (IgM), κ (kappa light chain), λ (lambda light chain).

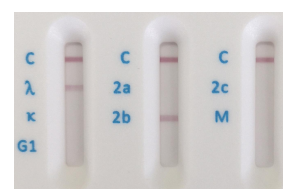
Typical results using culture supernatants of hybridoma cells



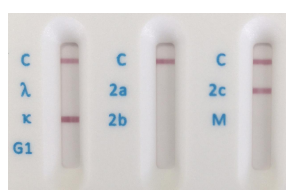
Rat IgG1 with κ light chain



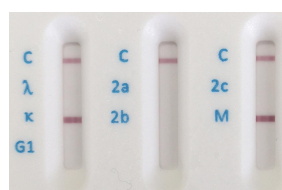
Rat IgG2a with κ light chain



Rat IgG2b with λ light chain



Rat IgG2c with κ light chain



Rat IgM with κ light chain